



Ellis Theater  
311 Byrd Avenue  
Philadelphia, MS 39350  
[www.congressofcountrymusic.org](http://www.congressofcountrymusic.org)  
601-653-5358

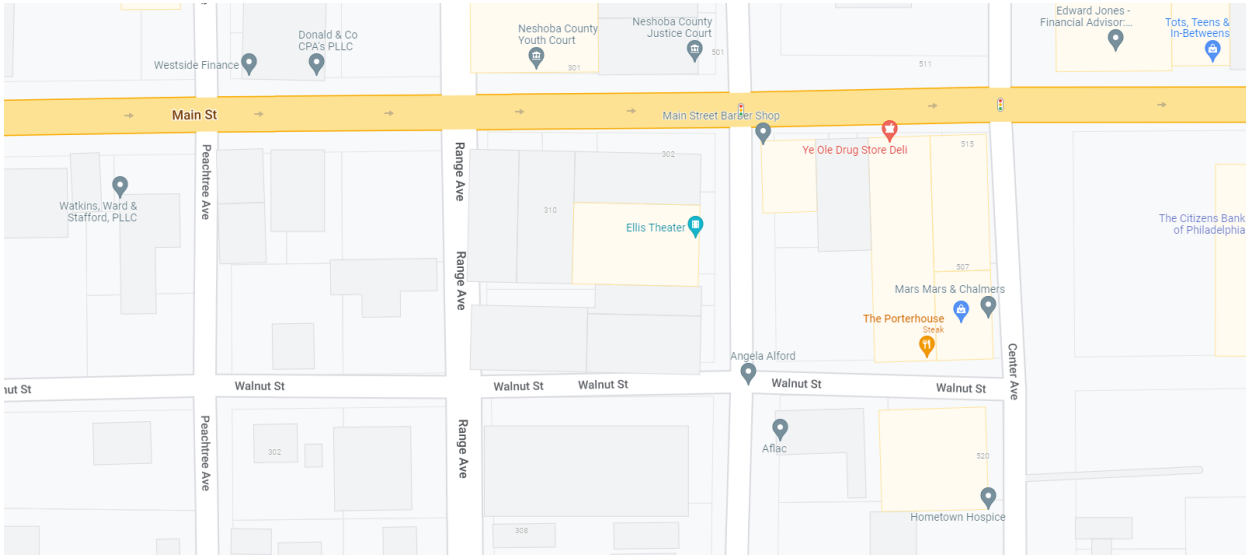
## Technical Information

Dan Barnard, Executive Director  
Cell: 956-793-9156  
Email: [dan@congressofcountrymusic.org](mailto:dan@congressofcountrymusic.org)

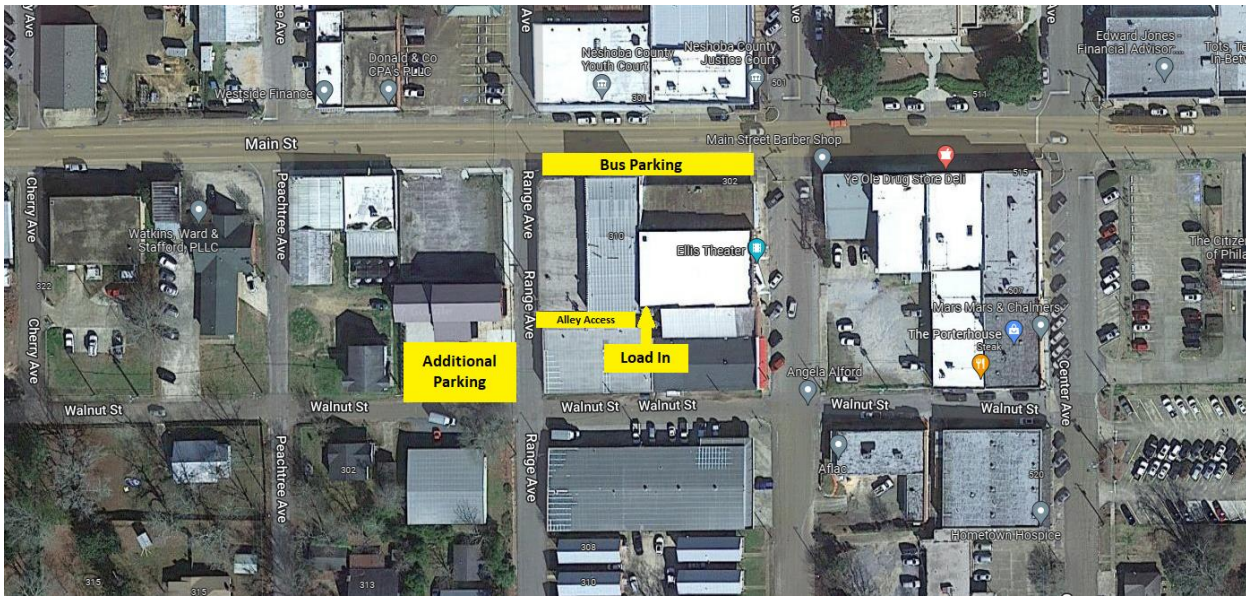
Josh Millward, Technical Director  
Cell: 813-299-8145  
Email: [josh.millward@gmail.com](mailto:josh.millward@gmail.com)

## Maps and parking:

Please note: Main Street is a one-way street going east. One block north is a one-way street going west.



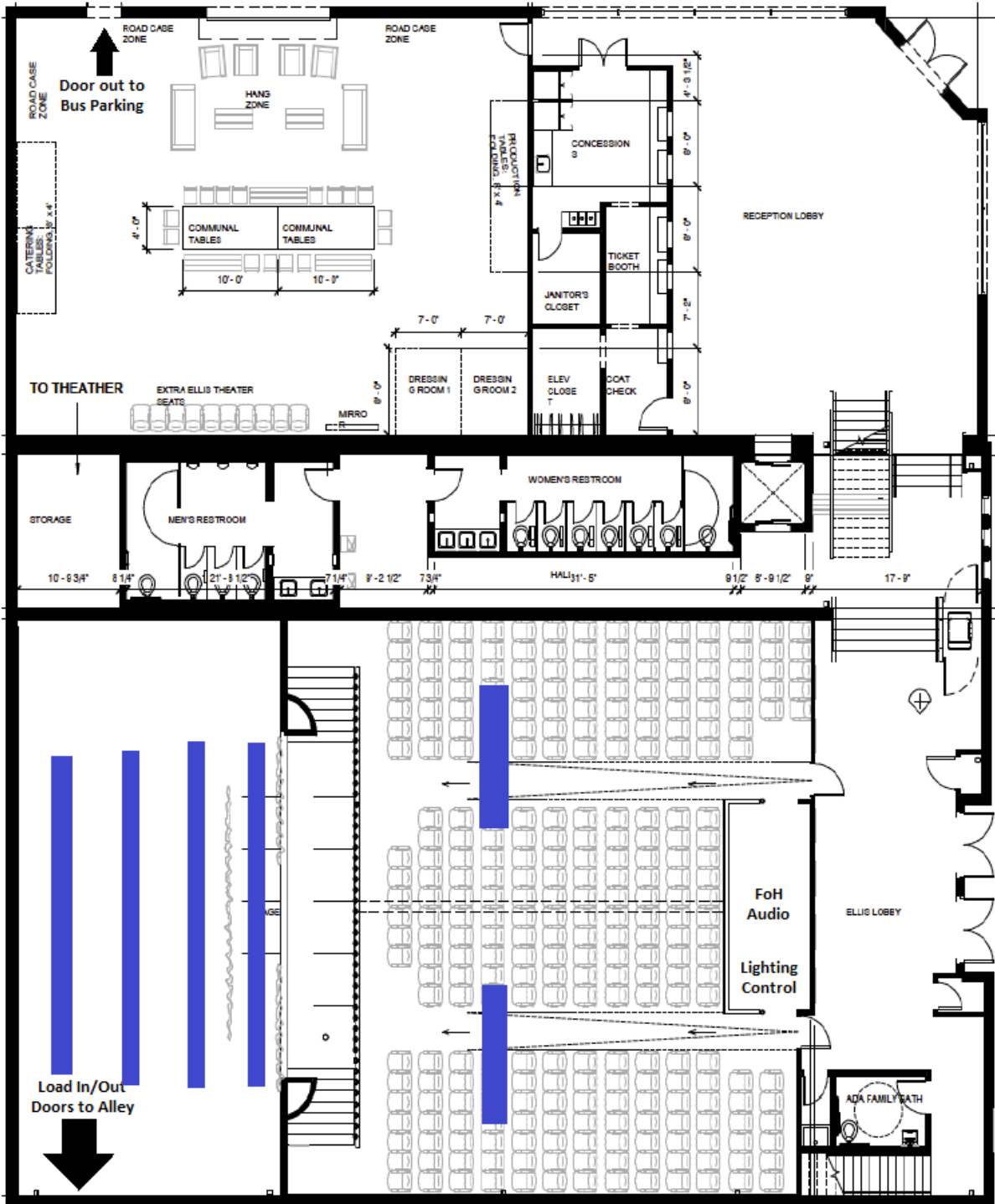
## Parking and load in/out Locations:



No shore power is available at the “Bus Parking”, your generator is allowed.

Shore power is available at the “Additional Parking” location.

Trucks and trailers can be parked in the alley access.



FOH ACCESS: Stairs at downstage left and right of downstage apron.

LOAD-IN DOOR: Standard double door from alley off Range Road directly onto the stage.

STAGE DIMENSIONS:

- Proscenium: 32' w, 17' 8" h
- Depth: 27' 7"
- Apron: 8'
- Wing left: 12'
- Wing right: 11'

DRAPERY:

- The Ellis Theater does not have a fly-bay / fly-rail system.
- All scenery and curtains must be dead-hung.
- There is a main curtain, with blackout.
- Please note the main curtain is currently not functional.
- There is an upstage black curtain.

STAGE POWER:

- 100-Amp, 3-Phase Company Switch w/ 1016 female Cams and lugs to accept 4-0 cable
- 200-Amp, 3-Phase Company Switch w/ 1016 female Cams and lugs to accept 4-0 cable
- Standard 5-15R duplex receptacles in floor pockets, RPC=Audio, IQ=Lighting
- PowerCon loop thru extensions and stage drops for additional distribution

LIGHTING:

Lighting Console:

- 1 ETC Current: Eos Puck Dual Screen
- 1 ETC Eos Fader Wing, 10-Fader

Fixtures:

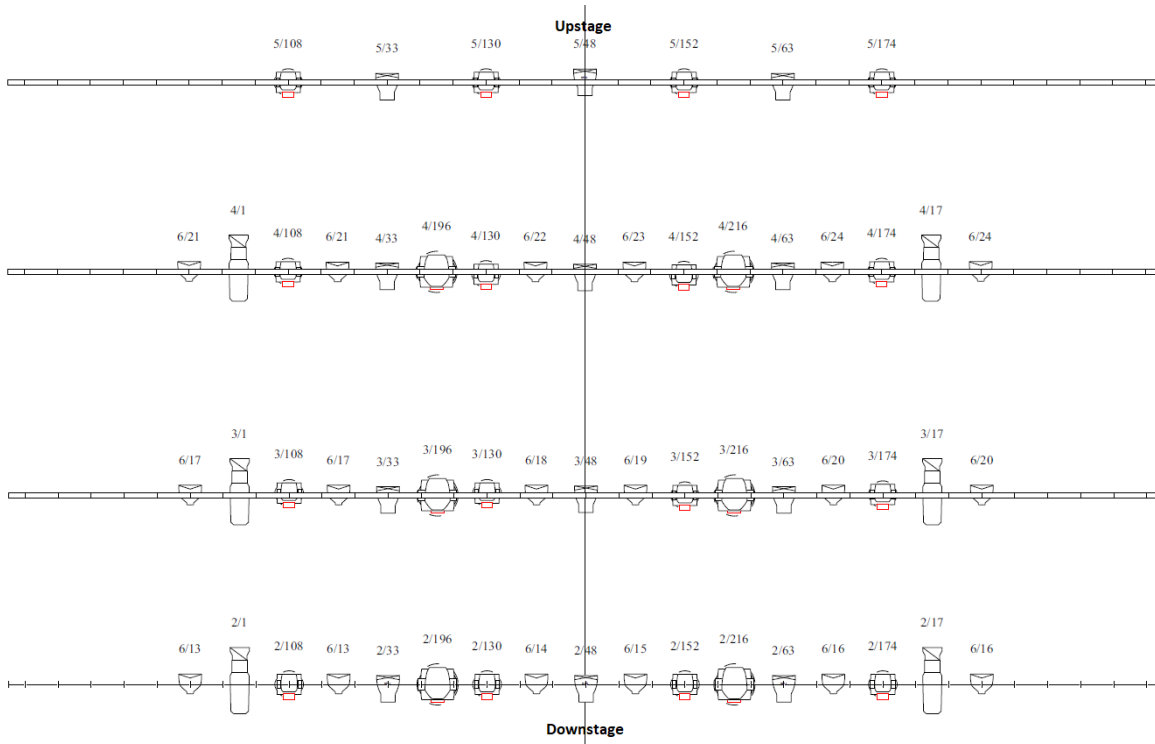
- 4 Chauvet Maverick Force S Moving Spot
- 6 Chauvet Rogue R1X Moving Spot
- 16 Chauvet Rogue R1X Moving Wash
- 12 ETC Desire D40 LED Static PAR-Shaped Wash
- 10 ETC S4 Lustr LED Static Ellipsoidal - 26°
- 12 ETC Source 4 Leko 750 - 19°
- 12 ETC Source 4 Par 750

OTHER:

- 2 Chauvet Hurricane Haze 2D Haze Generator

Lighting Plot:

Stage:



Front of House:



Please note: There are currently no followspots available, and no locations to put followspots if they were available.

Lighting Patch:

Channel	Address	Fixture	Type	Label	Keywords
1	6/101		Dimmer		DSR
2	6/102		Dimmer		DSL
3	6/104		Dimmer		DSC
4	6/103		Dimmer		MSL
5	6/105		Dimmer		MSR
6	6/106		Dimmer		MSC
7	6/107		Dimmer		MSC
8	6/108		Dimmer		MDL
9	6/109		Dimmer		MSR
10	6/110		Dimmer		DSC
11	6/111		Dimmer		DSR
12	6/112		Dimmer		DSL
13	6/113	Parcan			
14	6/114	Parcan			
15	6/115	Parcan			
1					
16	6/116	Parcan			
17	6/117	Parcan			
18	6/118	Parcan			
19	6/119	Parcan			
20	6/120	Parcan			
21	6/121	Parcan			
22	6/122	Parcan			
23	6/123	Parcan			
24	6/124	Parcan			
25	1/1-8	S4 LED Lustr+	Direct		
26	1/17-24	S4 LED Lustr+	Direct		
27	1/33-40	S4 LED Lustr+	Direct		
28	1/49-56	S4 LED Lustr+	Direct		
29	2/1-8	S4 LED Lustr+	Direct		
30	2/17-24	S4 LED Lustr+	Direct		
31	3/1-8	S4 LED Lustr+	Direct		
32	3/17-24	S4 LED Lustr+	Direct		
33	4/1-8	S4 LED Lustr+	Direct		
34	4/17-24	S4 LED Lustr+	Direct		
35	2/33-40	D40 Fire	Direct		
36	2/63-70	D40 Fire	Direct		
37	2/48-55	D40 Fire	Direct		
38	3/33-40	D40 Fire	Direct		

Channel	Address	Fixture	Type	Label	Keywords
2					
39	3/48-55	D40 Fire	Direct		
40	3/63-70	D40 Fire	Direct		
41	4/33-40	D40 Fire	Direct		
42	4/48-55	D40 Fire	Direct		
43	4/63-70	D40 Fire	Direct		
44	5/33-40	D40 Fire	Direct		
45	5/48-55	D40 Fire	Direct		
46	5/63-70	D40 Fire	Direct		
51	1/101-129	Maverick Force S Spot	29ch		
52	1/130-158	Maverick Force S Spot	29ch		
53	1/159-187	Maverick Force S Spot	29ch		
54	1/188-216	Maverick Force S Spot	29ch		
55	2/196-214	Rogue R1X Spot	19ch		
56	2/216-234	Rogue R1X Spot	19ch		
57	3/196-214	Rogue R1X Spot	19ch		
58	3/216-234	Rogue R1X Spot	19ch		
59	4/196-214	Rogue R1X Spot	19ch		
60	4/216-234	Rogue R1X Spot	19ch		
61	2/108-128	Rogue R1X Wash	21ch		
62	2/130-150	Rogue R1X Wash	21ch		
63	2/152-172	Rogue R1X Wash	21ch		
64	2/174-194	Rogue R1X Wash	21ch		
65	3/108-128	Rogue R1X Wash	21ch		
3					
66	3/130-150	Rogue R1X Wash	21ch		
67	3/152-172	Rogue R1X Wash	21ch		
68	3/174-194	Rogue R1X Wash	21ch		
69	4/108-128	Rogue R1X Wash	21ch		
70	4/130-150	Rogue R1X Wash	21ch		
71	4/152-172	Rogue R1X Wash	21ch		
72	4/174-194	Rogue R1X Wash	21ch		
73	5/108-128	Rogue R1X Wash	21ch		
74	5/130-150	Rogue R1X Wash	21ch		
75	5/152-172	Rogue R1X Wash	21ch		
76	5/174-194	Rogue R1X Wash	21ch		
77			Dimmer		
78			Dimmer		
79			Dimmer		
80			Dimmer		
81			Dimmer		
82			Dimmer		
83			Dimmer		

Channel	Address	Fixture	Type	Label	Keywords
101	6/1-4	LED RGBW 8B	Strip Lights		
102	6/5-8	LED RGBW 8B	Strip Lights		
103	6/9-12	LED RGBW 8B	Strip Lights		
104	6/13-16	LED RGBW 8B	Strip Lights		
105	6/17-20	LED RGBW 8B	Strip Lights		
4					
106	6/21-24	LED RGBW 8B	Strip Lights		
107	6/25-28	LED RGBW 8B	Strip Lights		
108	6/29-32	LED RGBW 8B	Strip Lights		
109	6/33-36	LED RGBW 8B	Strip Lights		
110	6/37-40	LED RGBW 8B	Strip Lights		
111	6/41-44	LED RGBW 8B	Strip Lights		
112	6/45-48	LED RGBW 8B	Strip Lights		
113	6/49-52	LED RGBW 8B	Strip Lights		
114	6/53-56	LED RGBW 8B	Strip Lights		
115	6/57-60	LED RGBW 8B	Strip Lights		
116	6/61-64	LED RGBW 8B	Strip Lights		
117	6/65-68	LED RGBW 8B	Strip Lights		
118	6/69-72	LED RGBW 8B	Strip Lights		
119	6/73		Dimmer		Circle Lights HL
120	6/74		Dimmer		Circle Lights HR
121	6/75		Dimmer		Circle Lights FOH
122	6/76		Dimmer		Circle Lights 2
123	6/77		Dimmer		Circle Lights 3
124	6/78		Dimmer		Circle Lights 4
125	6/79		Dimmer		Circle Lights 5
126	6/81		Dimmer		
127	6/82		Dimmer		
128	6/83		Dimmer		Balcony/Hall
5					
129	6/84		Dimmer		Aisle
130	6/85		Dimmer		OPEN 0-10
131	6/86		Dimmer		Aisle
132	6/87		Dimmer		OPEN 0-10
133	6/88		Dimmer		OPEN 0-10
134	6/89		Dimmer		Circle Lobby 1
135	6/90		Dimmer		FOH
136	6/91		Dimmer		Lobby 2
137	6/92		Dimmer		OPEN 0-10
138	6/93		Dimmer		Stage Work Lights
139	6/94		Dimmer		OPEN 0-10
140	6/95		Dimmer		OPEN 0-10



Channel	Address	Fixture	Type	Label	Keywords
141	6/96		Dimmer		OPEN 0-10
142			Dimmer		
143	6/94		Dimmer		Wall Sconce
144	6/98		Dimmer		FOH Red/Blue
145	6/99		Dimmer		
146	6/100		Dimmer		
201	6/125		Power Relay		R1
202	6/126		Power Relay		R2
203	6/127		Power Relay		R3
204	6/128		Power Relay		R4
205	6/129		Power Relay		R5
6					
206	6/130		Power Relay		R6
207	6/131		Power Relay		R7
208	6/132		Power Relay		R8
209	6/133		Power Relay		R9
210	6/134		Power Relay		R10
211	6/135		Power Relay		R11
212	6/136		Power Relay		R12
213	6/137		Power Relay		R13
214	6/138		Power Relay		R14
215	6/139		Power Relay		R15
216	6/140		Power Relay		R16
217	6/141		Power Relay		R17
218	6/142		Power Relay		R18
219	6/143		Power Relay		R19
220	6/144		Power Relay		R20
221	6/145		Power Relay		R21
222	6/146		Power Relay		R22
223	6/147		Power Relay		R23
224	6/148		Power Relay		R24
225	6/149		Power Relay		R25
226	6/150		Power Relay		R26
227	6/151		Power Relay		R27
228	6/152		Power Relay		R28

## AUDIO:

### Stage Boxes :

- Digico MQ Rack 48x24 – BNC MADI – FoH Inputs and House PA Outputs
- Digico D-Rack 32x16 – CAT5 MADI – RF Inputs & Monitor Outputs
- Both stage boxes located in Amp Room
- Inputs to stage boxes are via floor pockets with XLR patch lines into stage boxes

### FoH Console:

- Digico Quantum 225

### Monitor Console:

- Digico SD9

### Loudspeakers:

- 20 – L-Acoustics Kara Ili, configured 10 per side
- 8 – L-Acoustics SB18i, configured 4 per side flown behind main PA with cardioid pattern
- 4 – L-Acoustics X8, Front Fills at stage lip
- 9 – L-Acoustics X12, Monitor Wedges

### Microphones, Wired:

- 2 – AKG 414 XL-II
- 7 – AKG 451B
- 1 – Audio Technica AE-2500 Dual Element
- 2 – Neumann KMS105
- 6 – Sennheiser 904
- 4 – Sennheiser 906
- 4 – Sennheiser MD421-II
- 1 – Shure Beta52
- 4 – Shure Beta58A
- 4 – Shure Beta87C
- 4 – Shure SM57
- 1 – Shure SM48S (FoH Talkback Mic)

### Wireless Mic Equipment:

- 2 – Shure RU4D, G1 band, 470-530 MHz, Dual Channel Wireless Mic receiver
- 4 – Shure UR1, G1 band, 470-530 MHz, beltback transmitter
- 4 – Countryman ISOMax E6 Headset Mic L1SL
- 4 – Shure UR2, G1 band, 470-530 MHz, handheld transmitter
- 4 – Shure Beta58A mic capsules for UR2 transmitter
- 2 – Shure Beta87A mic capsules for UR2 transmitter (super-cardioid)

#### Direct Box Interfaces:

- 6 – Radial J48 active DI
- 4 – Radial JDI passive DI
- 2 – Radial ProD2 dual channel passive DI
- 1 – Radial JPC passive AV DI

#### Stands:

- 6 – K&M 21090.500.55, standard tripod base with adjustable boom
- 4 – K&M 25900.500.55, shorty tripod base with adjustable boom
- 1 – K&M 25910.500.55, very short tripod base with adjustable boom
- 6 – Atlas standard tripod base with adjustable boom
- 6 – Atlas standard round base
- 2 – Atlas short round base with adjustable boom
- 2 – Atlas very short round base with adjustable boom

#### Cables:

- 30 – 25' XLR
- 20 – 15' XLR
- 8 – 6' XLR
- 6 – Whirlwind 1/4" instrument cable
- 2 – Whirlwind 6-channel subsnake
- 1 – Whirlwind 12-channel subsnake

#### Miscellaneous:

- 10 – Guitar stands
- 4 – Wooden stools
- 30 – Music Stands
- 40 – Performer chairs